


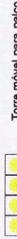




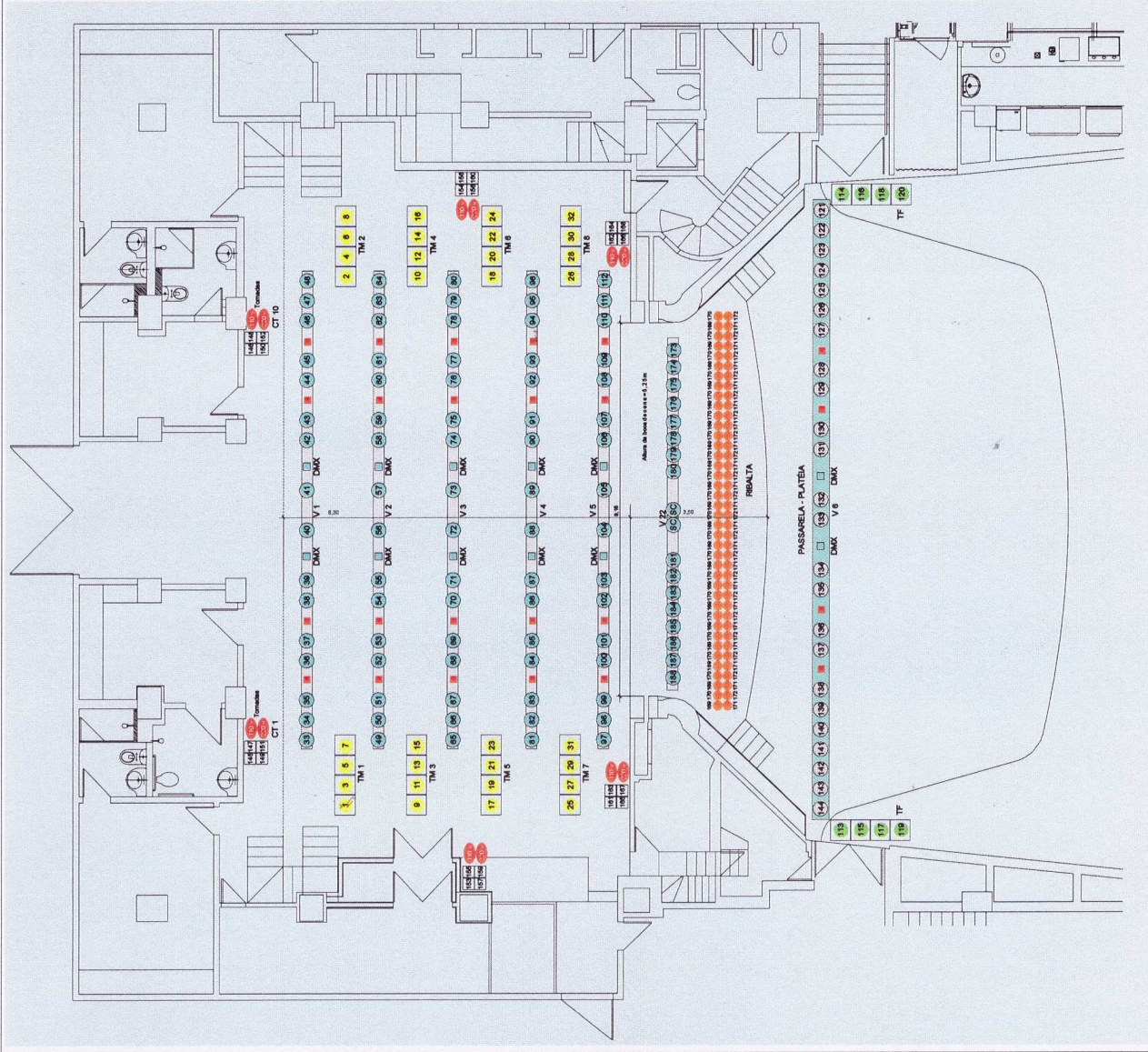


LEGENDA

-  Vara de iluminação de 12 metros
-  Passarela de iluminação em estrutura metálica
-  Luzes da Ribalta
-  Torre móvel para palco
-  Torre fixa no balcão
-  Tomadas no palco
-  ND= Não dimetizável
-  DMX= Conectores XLR



SESC

RIO DE JANEIRO

ASPRO
ASSESSORIA DE PROJETOS ESPECIAIS

UNIDADE
SESC GINÁSTICO
AV. GRAÇA ARABANA, Nº 337 - CENTRO

TÍTULO
MAPA DA ILUMINAÇÃO CÊNICA